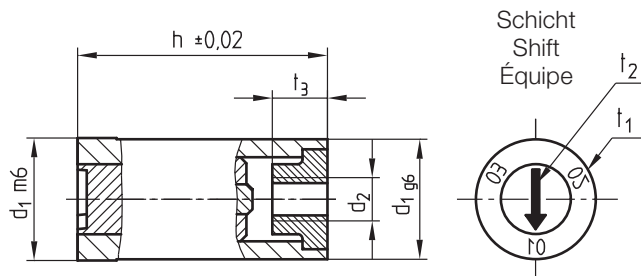
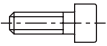


Z4861/2/...

Mat.: 1.2343/52 ± 2 HRC

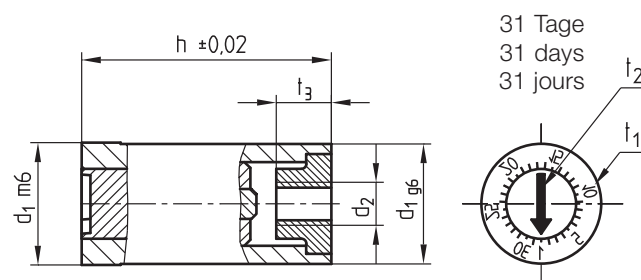
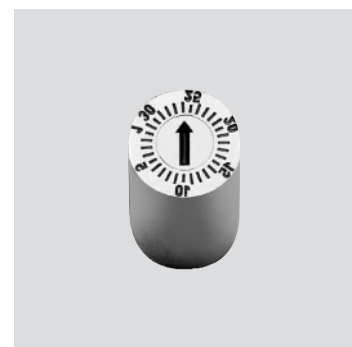


Neu / New / Nouveau

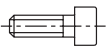
DIN 912	d ₂	t ₁	t ₂	t ₃	Typ	d ₁	h	Nr./No.	
	M2 x20	M2	0,3	0,7	2,5	2	4	12,5	Z4861/2/ 4x12,5
	M2,5x20	M2,5					5	14	5x14
	M3 x20	M3	0,9	5,5		6	16	6x16	
						8	18	8x18	
						10	22	10x22	
	M4 x20	M4				12	25	12x25	

Z4861/3/...

Mat.: 1.2343/52 ± 2 HRC



Neu / New / Nouveau

DIN 912	d ₂	t ₁	t ₂	t ₃	Typ	d ₁	h	Nr./No.	
	M2 x20	M2	0,3	0,7	2,5	3	4	12,5	Z4861/3/ 4x12,5
	M2,5x20	M2,5					5	14	5x14
	M3 x20	M3	0,9	5,5		6	16	6x16	
						8	18	8x18	
						10	22	10x22	
	M4 x20	M4				12	25	12x25	

This is trial version
www.adultpdf.com